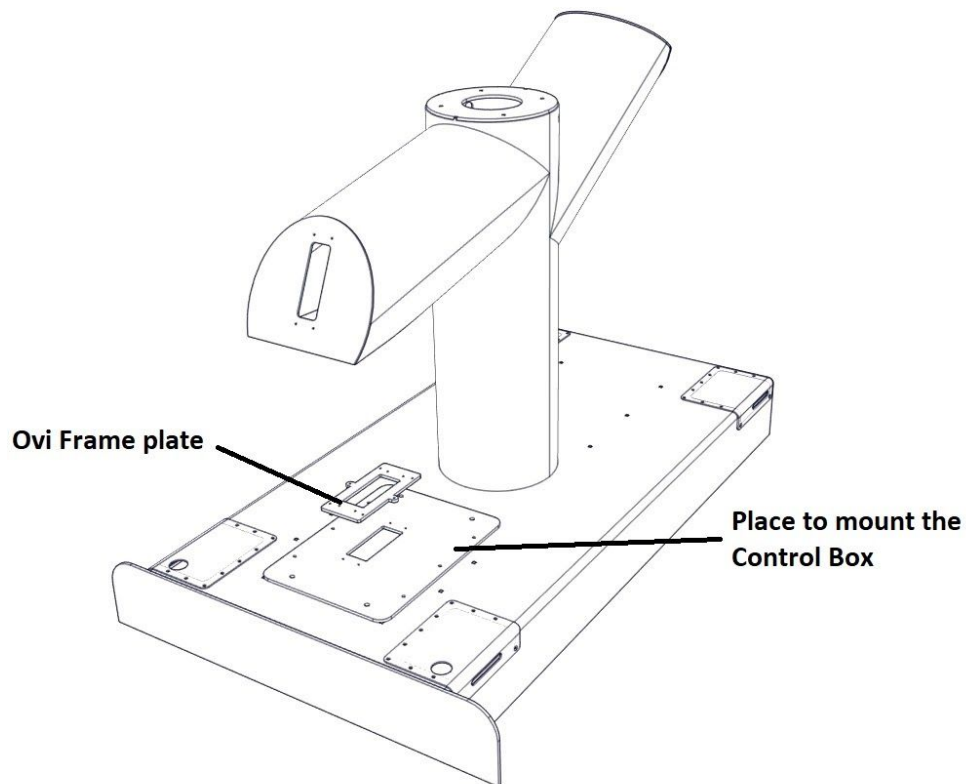


UR+ Integration

I.Ovi frame

Ovi frame comes with all the electrical connections made. All wires end in plugs that are specially marked such as the user can mount them without struggle. The frame also contains a power supply cord, thus the power cord that the robots comes with will not be needed.

The user needs to mount the Control Box on the frame, after removing the plate on the bottom of the Control Box. Once the plate is removed, the user needs to mount the plate that Ovi frame comes with, substituting the one that the Control Box comes with.



II. Installation procedure for CB3 robot

The Robot Arm is mounted using four M8 bolts that are provided, tightened with 20 Nm torque.

DANGER:

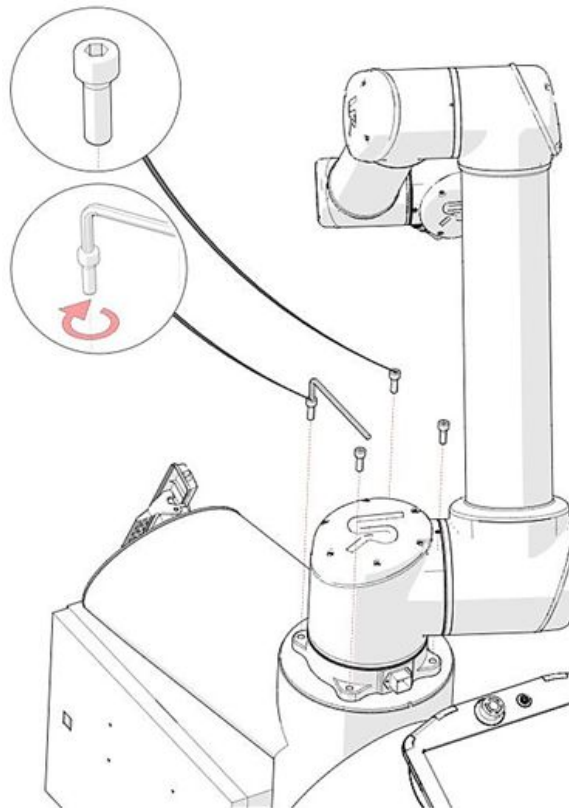


1. Make sure the Robot Arm is properly and securely bolted in place. Unstable mounting can lead to accidents;
2. Make sure the Control Box, Teach Pendant, and cables do not come into contact with liquids. A wet Control Box could cause fatal injury.

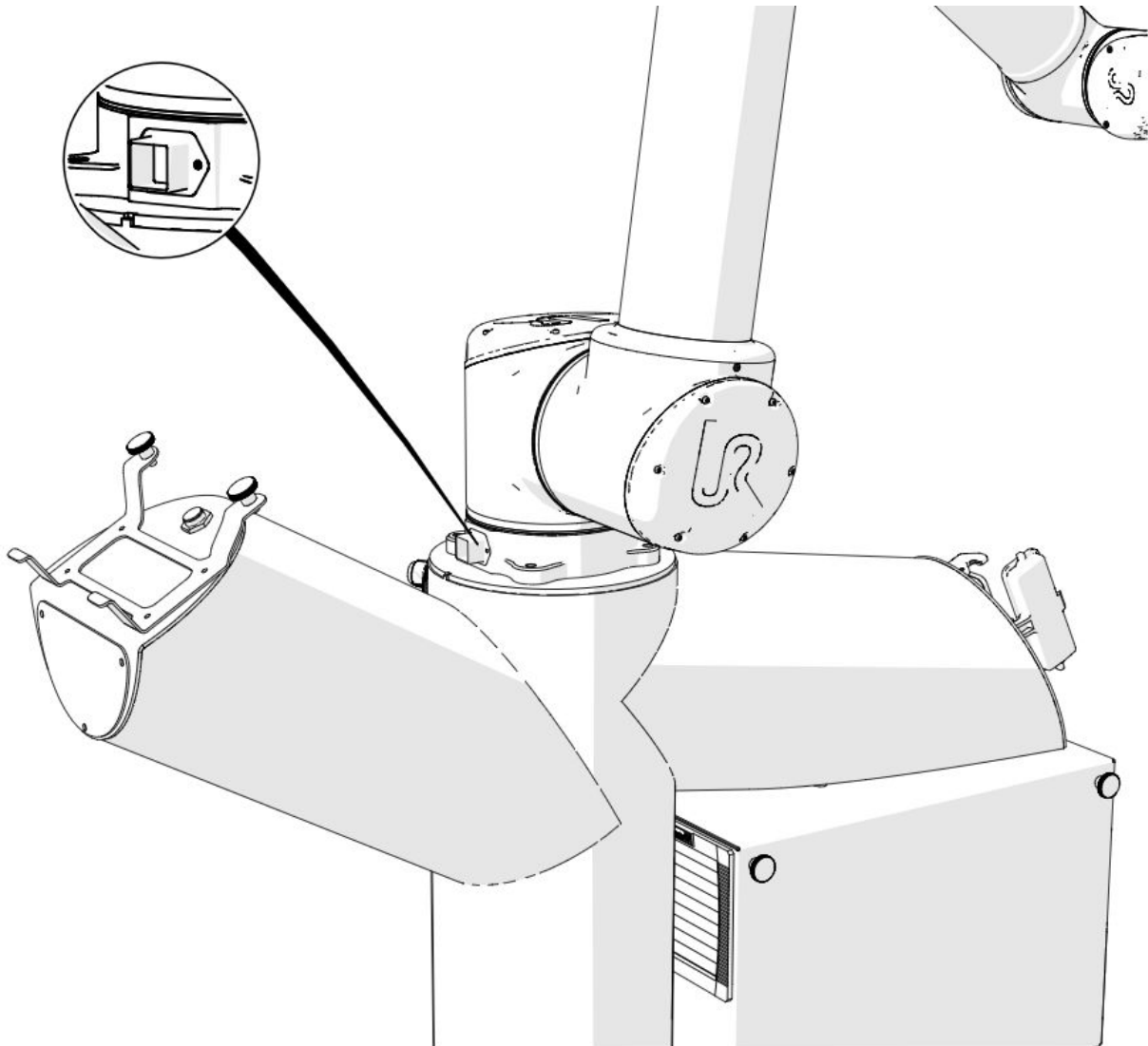
CAUTION:



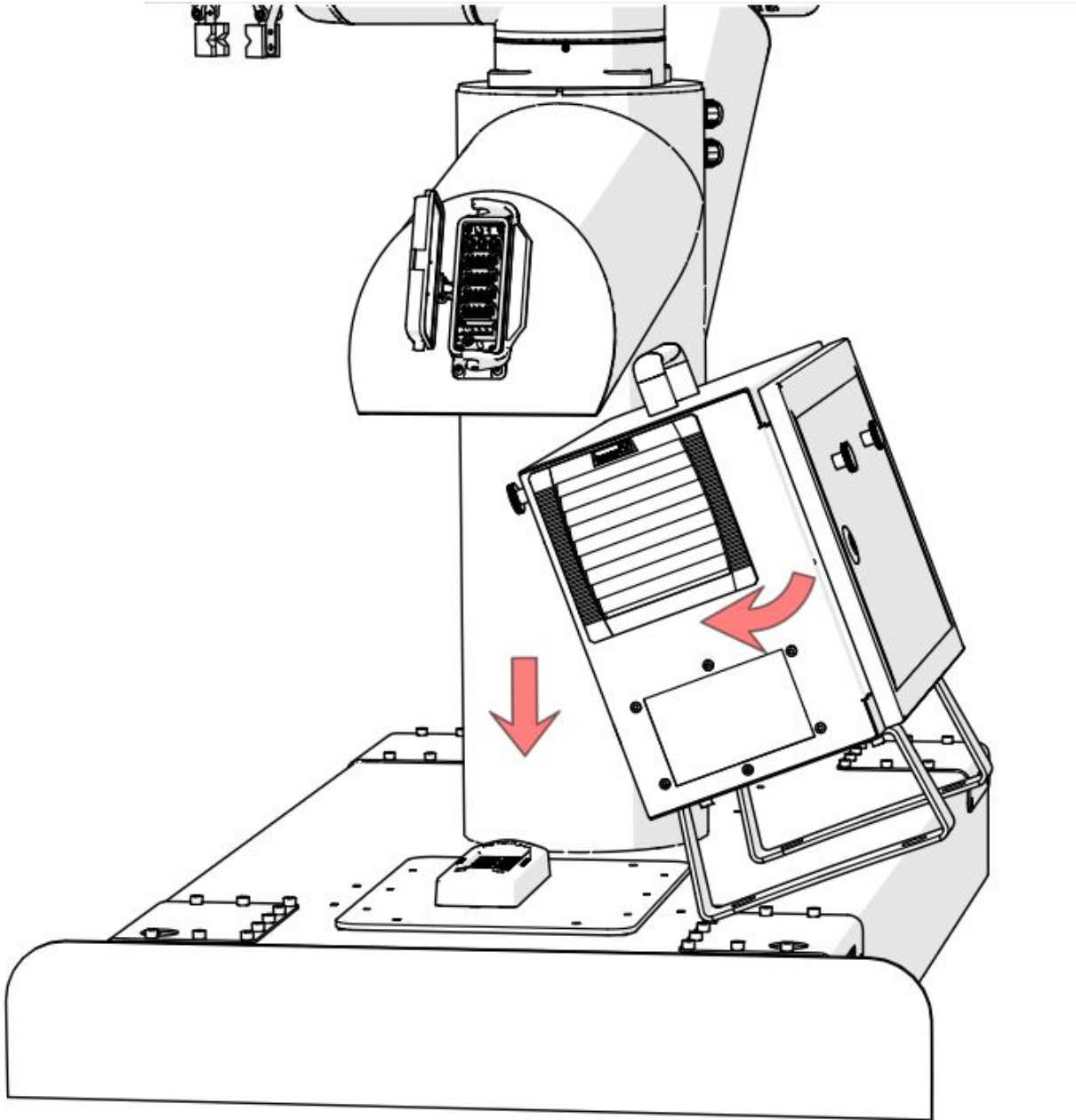
Mount the robot in an environment suited for the IP rating. The robot must not be operated in environments that exceed those corresponding to the IP ratings of the robot (IP54), Teach Pendant (IP54) and Control Box (IP44).

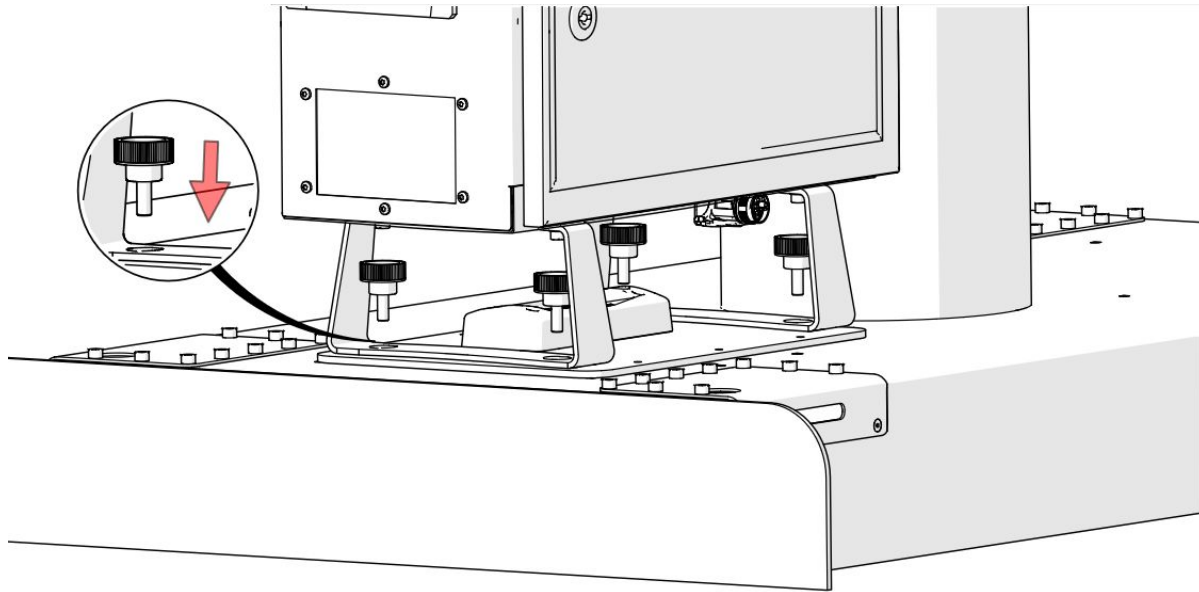


After the robot is mounted on the frame side power cord must be connected with the robot side plug, in the socket illustrated below.



The control box has to be mounted on the frame as shown in the picture below. The four knobs are manually used to fix the control box to the frame.



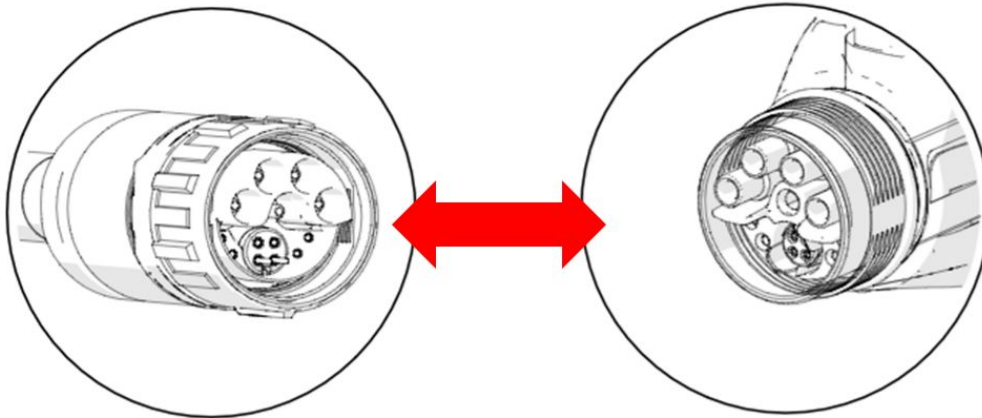


The illustration below shows the layout of electrical interface groups inside the Control Box of the robot. The user has to put all the plugs into the below panel accordingly.

Safety		Remote		Power		Configurable Inputs		Configurable Outputs		Digital Inputs		Digital Outputs		Analog	
Emergency Stop	24V	12V	PWR	24V	24V	0V	0V	24V	24V	0V	0V	DO0	DO4	Analog Inputs	AG
	E10	GND	GND	CI0	CI4	CO0	CO4	D10	D14	DO0	DO4	AI0			
	24V	ON	24V	24V	24V	0V	0V	24V	24V	0V	0V	DO1	DO5		AI1
E11	OFF	0V	CI1	CI5	CO1	CO5	D11	D15	0V	0V	DO2	DO6	AG		
24V			24V	24V	0V	0V	24V	24V	24V	24V	0V	0V	AG		
SI0			CI2	CI6	CO2	CO6	D12	D16	24V	24V	0V	0V	AO0		
24V			24V	24V	0V	0V	24V	24V	DI3	DI7	DO3	DO7	AO1		
SI1			CI3	CI7	CO3	CO7									

III. Installation procedure for UR10 e-series robot

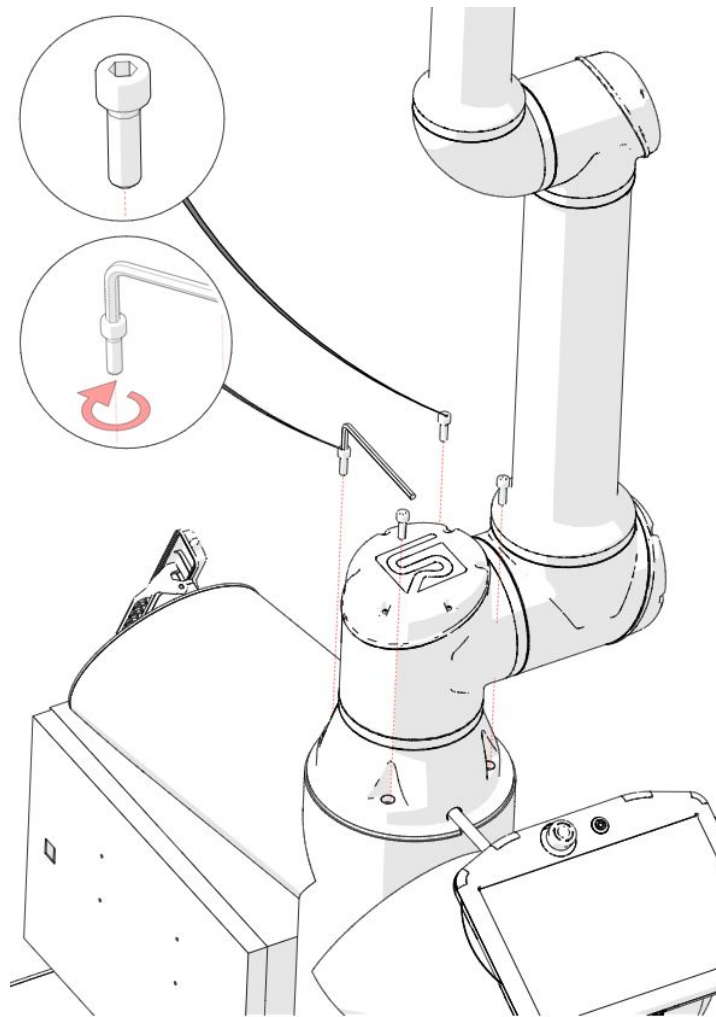
For e-series, the first step for installation is to connect the power cord that comes with the frame with the robot power cord (see picture below). The user will put the extra cord inside the frame.



Robot side

Frame side

Once the connection is made, the robot is mounted on the frame, using four M8 bolts that are provided, tightened with 20 Nm torque.



The control box has to be mounted on the frame as shown in the picture below. The four knobs are manually used to fix the control box to the frame.

